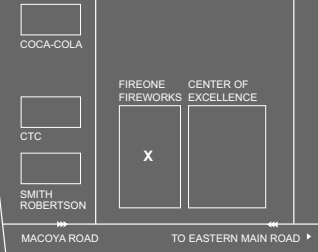


CHURCHILL ROOSEVELT HIGHWAY



P. 868.662.5261  
F. 868.662.6523

[info@fireonefx.com](mailto:info@fireonefx.com)

Address:  
Macoya Road, Trincity  
Trinidad & Tobago, W.I.

Mailing address:  
P.O. Box 299,  
Port-of-Spain,  
Trinidad & Tobago, W.I.

[www.fireonefx.com](http://www.fireonefx.com)





#### **APPROACH** the philosophy

Like an artist we take pride in each and every production. Our work goes beyond a career, it is our passion and it shows. It stops you. It involves you in a palpable dream. It affects you. It stays with you. It articulates. We sell excitement.

#### **the work**

Our pyrotechnic specialists are available to deal with every aspect of an indoor or outdoor event, from a wedding or corporate event to the complete logistics of an international reggae tour. We are responsible for some of the most spectacular and prestigious displays ever staged in Trinidad and Tobago and the Caribbean. Fireone is the pioneer in the design and installation of special effects and fireworks.

#### **the thrill**

Our work goes beyond visual appeal and takes you into the realm of the emotional. We heighten the response of our audience and transform any event into something absolutely magical. We create an environment where something transcendent can happen. All thrills courtesy Fireone.

#### **the people**

Our team with their dedication to their profession ensures audiences of a breathtaking and magical experience for each and every performance. Their combined experience, both artistic and scientific is guaranteed to leave any audience breathless.

**'WE CREATE AN ENVIRONMENT WHERE SOMETHING TRANSCENDENT CAN HAPPEN'**





**'OUTDOOR  
ENTERTAINMENT  
THAT IS A  
SENSORY  
EXHIBITION'**

**FIREWORKS DISPLAYS**

**the effect**

The sky is our canvas. Let us paint it with orchestrated fireworks using state-of-the-art digital design and show control systems. Fiery ground displays blend dazzling low-level tableaux into pyrotechnic theatrics punctuated by extraordinary 360 degree aerial fireworks. We provide outdoor entertainment that is a sensory exhibition.

**the display**

Each fireworks program is custom designed to the unique needs of our customers, taking into consideration budget, site availability, type of firework and length of display. Our services range from traditional displays to more sophisticated pyromusical productions where the latest in technology is used to choreograph precision-timed brilliant aerial fireworks programs to music.

**the client**

As the client, you provide us with the location and a budget. Fireone will survey the location, obligation free to find out if your idea is possible. We obtain the necessary permits for the location and handle all legal paperwork involved. Surveys, planning, permits and cleanup – it's all part of a Fireone performance.

**the commitment**

Legislative and safety concerns are reflected in the company's membership and participation in the American Pyrotechnic Association, Pyrotechnics Guild International and a host of international organizations.





## SPECIAL EFFECTS

### the accent

Our special effects and close proximity pyrotechnics emphasize subtle moments, inspire dramatic scenes, sustain exhilarating action and highlight electrifying encores. Thrill unsuspecting audiences with an array of effects to give your event that extra special touch. Here is a partial listing of our effects since our list is unlimited, you dream it, we have it.

## 'THRILL UNSUSPECTING AUDIENCES WITH AN ARRAY OF WOW EFFECTS'

### FLAMES

[Flame Effects, Tiki  
Torches, Prism Coloured  
Flame System]

### SMOKE

[Low Lying Fog, Co2 jets,  
Haze machines, Ring  
Rocket, Steam]

### CONFETTI & STREAMERS

[Confetti Cannon, Confetti  
Gerb, Streamer Cannon,  
Flick Sticks]

### WATER

[Liquid Fireworks, Water  
Cannons, Geysers,  
Ran/Mist Systems, Snow]

### LASER

### SKY DANCERS

### GERBS

### BUBBLES & FOAM CUSTOM LAB



**A. FLAME EFFECTS**

These are very impressive special effects that can create a simple torch to a simulated atom bomb blast to a 40 foot flame. The flames are controlled by an electronic firing system and can be adjusted and synchro-

nized with music to create a pyromusical production.

**B. TIKI TORCHES**

Our ambiance torches are an economical solution for applications requiring a safe torch effect. We have a variety of torches ranging from regular to

coloured flame. All torches run on propane.

**C. PRISIM COLOURED FLAME**

This is a new and innovative product for creating a coloured flame effect. Using the patented Magic Corona fluid and

standard compressed air, the prism system gives you the ability to shoot coloured flame approximately 12 feet high. Up to four colours can be housed inside the unit so that a colour change is available on demand. Colours include green, red, blue and yellow.



**E. LOW LYING FOG**

A thick white low lying fog that sits on the ground level. This effect is great to combine with lighting effects. It can also be dispersed at different intervals throughout the event to set the desired mood.

**F. CO2 JETS**

These jets create plumes of cyro fog up to 20 feet high. This stream of heavy white fog propels either upwards or in any direction set. They are great to combine with lighting effects. The jets can be angled into the

crowd to create a cool zone or in any direction or location desired. We have a wide variety of distribution systems for atmospheric smoke effects. From a waterfall of cyro fog to a projection screen made of fog, anything is possible.



G



H



I

E



F

**G. STEAM EFFECT**

Steam effects can be used to create a leaky valve to a full blown pipe rupture. so that the float upwards, any bubble is possible. Foam is great for nightclubs, special events and more; dance in it, ride through it or make clouds with it.

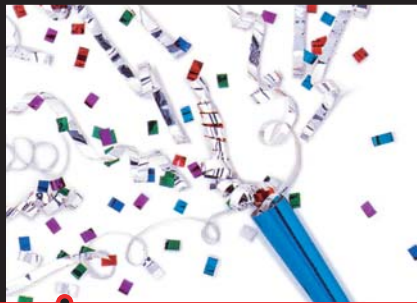
**H. RING ROCKET**

Celestial 20" rings of smoke soar through the air to 50' on a straight trajectory. Great for nightclubs, amusement parks, science museums and special events

**I. HAZE MACHINES**

Want that tropical mist blowing through your event? In addition to placing water into the atmosphere, haze provides the right ambiance.





### J. STREAMER CANNON

The High Altitude Streamer Cannon is a large-scale streamer delivery system capable of launching colossal streamer products high into the sky. Spectacular streamer effects are

achieved on a stadium-sized scale.

### K. FLICK STICKS

These flick sticks are an ingenious product that shoots confetti with the flick of your hand. They are available in a wide variety of presentations

and effects and are ideal to give out to patrons.

### L. CONFETTI GERB

These units are CO2 powered and can propel up to 50 pounds of confetti. The high-altitude model can throw confetti up to 100 feet high!

### M. CONFETTI CANNON

We can fill a football field in 60 seconds or provide a light spray for more quiet events. The cannon is capable of propelling confetti up to 200 feet. Clients can customize colours, shapes and

material. Basic colours and metallic are available in tissue material as well as foil. Shapes such as hearts, rose buds and stars can be specially ordered. Other items can be blasted into the air such as puffballs, feathers, nerf balls and other promotional items.

J

K

L

M



## N. LIQUID FIREWORKS

The Liquid Fireworks feature patented array of individually articulated nozzles, creating a dazzling display of extraordinary effects that look like fireworks. The waters jump, twist, sway and swirl in

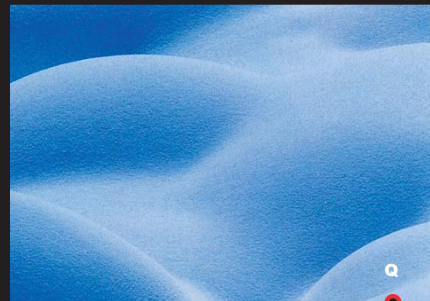
brehtaking movements surpassing that of human dancers. Illuminated with stunning colors, these spectacular performances easily keep audiences entertained for periods of 30 minutes or longer. Ask about the indoor and outdoor option.

## O. RAIN / MIST SYSTEMS

If your script calls for rain, we can produce it safely for you. We can create a light sprinkle to a total deluge. If coupled to our air moving and fog systems, an entire storm could be produced.



P



Q



R

N



O



## P. GEYSERS

These units produce a columned jet of water that shoots high into the air. Once the water reaches altitude, it breaks up into tiny droplets, showering the area with a fine mist.

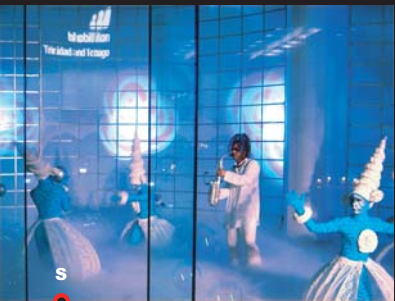
## Q. SNOW

Snow in the tropics or even a blizzard and it looks better than the real thing. Soft puffed texture, whitest available, no preservatives, non toxic and it melts away with water.

## R. WATER CANNONS

Our water cannon units are usually used to simulate explosions in water. We offer many different types and sizes of these effects. These cannons can be completely submerged so that the output nozzle is just below the surface of the water, remaining unnoticed until the water explodes.





S



T



U

## V. GERBS

These beautiful fountain-style effects produce a spray of bright sparks. These are specially designed to use indoors and are completely safe. They are available in a variety of colours, heights and length of time. Gerbs

also have their own distribution system that allows for a variety of different placement styles: a waterfall of sparks, a burst of stars as seen in wrestling matches or a fan effect that creates an exciting entrance on a catwalk.

## W. SKY DANCERS

These inflated sky puppets can be used to enhance any occasion. They are propelled by fans making the puppets dance. They are available in many different designs and may also be customized to your specifications.

## S. BUBBLE & FOAM

Our unique bubble effects are created through the use of machines that literally create hundreds of bubbles in seconds. Cover the area of your event with the natural beauty of slow-floating bubbles. A variety of bubble effects are possible, to oversized larger than life bubbles to bubbles filled with helium so that the float upwards, any bubble is possible. Foam is great for nightclubs, special events and more; dance in it, ride through it or make clouds with it.

## T. LASER

Displays feature full colour laser-drawn imagery, a custom music soundtrack, laser generated abstract designs, customized logos and illustrated animations. Show length and content are customized to meet specific requirements. A high speed projectors display laser drawn graphics in any proportion on screens, floors, walls, towers and buildings.

## U. CUSTOM LAB

Don't see exactly what you are looking for? That's because we can't list very effect we have. Contact us or come in and discuss your idea and we will custom manufacture an effect that suits your needs. We can wrap our heads around almost anything; you will be surprised to know which projects appeals to us. We love a challenge.

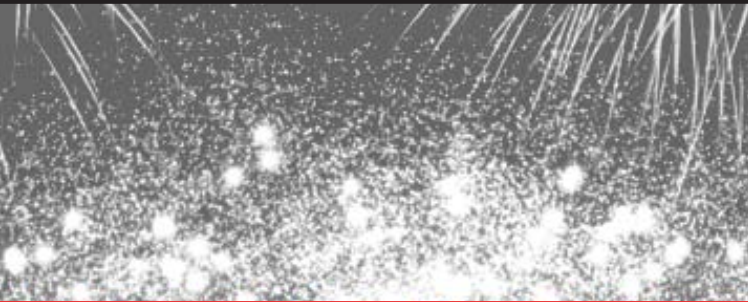


V



W





#### the selection

We carry over 1,000 different consumer fireworks that span over fourteen sub categories: Assortments, Crackers, Fountains, Missiles, Multicakes, Mine & shell devices, spinners & wheels , Novelty,

Reloadable shells, Rockets, Roman candles, Smoke items, Sparklers and miscellaneous items. These are available from Authorized Fireone resellers, at our exciting retail outlet in Macoya or purchased online.



#### CONSUMER FIREWORKS

##### the pioneer

Fireone has been lighting up the hearts and spirits of all since 1995 with our range of consumer fireworks. As pioneers in the pyrotechnic industry, we were the first to legally import and distribute an exciting range of consumer fireworks throughout Trinidad & Tobago, providing a new form of communal entertainment.

##### the responsibility

Our intense distribution network allows our products to be sold at several authorized outlets and exported throughout the Caribbean. We work closely with our wholesalers and retailers, obtaining the necessary paperwork and infrastructure to make them authorized Fireone distributors.

##### the commitment

Fireone is a charter member of the American Fireworks Standards Laboratory (AFSL) which operates the China Fireworks Quality Improvement Program, a testing program administered by an independent, internationally recognized testing laboratory. In addition to screening by our manufacturers, we maintain AFSL as a third party product testing laboratory that ensures our merchandise meets or exceeds all Consumer Product Safety Commission requirements. Those products that pass the AFSL factory level testing in China are then certified and shipped to Fireone which means our products are tested twice. We are committed to safety.

**'OVER 1000  
DIFFERENT  
CONSUMER  
FIREWORKS IN  
FOURTEEN SUB-  
CATEGORIES  
...THAT'S ALOT OF  
CHOICE'**











